



Hotels for Groups

Barnsley House

Barnsley GL7 5EE
T: 01285 740000
www.barnsleyhouse.com

Barnsley House is your private country house retreat in the Cotswolds graced by Rosemary Verey's world famous gardens. The hotel has a dedicated spa, private cinema and 18 luxurious bedrooms. From the moment you arrive, you'll find everything designed to make you feel perfectly at home.



The Barrel Store, Cirencester

Cirencester GL7 1JH
T: 01285 657181
www.newbreweryarts.org.uk/stayatnewbreweryarts

Great value stylish hostel sleeping 43. Part of the original Cirencester Brewery, the Barrel Store has been creatively transformed into contemporary accommodation; it is light and airy, with crafted touches throughout. Though simple, this accommodation has style and flair and meets Passivhaus standards.



The Bay Tree Hotel

Burford OX18 4LW
T: 01993 822791
www.cotswold-inns-hotels.co.uk/the-bay-tree-hotel

Nestled away on a quaint side street in Burford, the Bay Tree has 21 stylish bedrooms and endless character with flag stoned floors, roaring log fires and a secret walled garden.



The Bear of Rodborough Hotel

Near Stroud GL5 5DE
T: 01453 878522
www.cotswold-inns-hotels.co.uk/the-bear-of-rodborough

Set within 300 acres of National Trust land the Bear of Rodborough has 46 classic country bedrooms, a lively bar, restaurant and plenty of places to sit back and relax.



Best Western Mayfield House Hotel

Crudwell Near Tetbury, SN16 9EW

T: 01666 577409

www.mayfieldhousehotel.co.uk

A family owned and operated 3 star Country Hotel with a reputation for great local food and service with a real 'taste of the Cotswolds'. The Mayfield has 28 delightfully furnished rooms some of which are ground floor.



The Broadway Hotel

Broadway, WR12 7AA

T: 01386 852401

www.cotswold-inns-hotels.co.uk/the-broadway-hotel

Located in the heart of Broadway, overlooking the village green, The Broadway Hotel has 19 individually styled bedrooms, a lively bar, cosy lounge and award-winning brasserie.



Buckland Manor

Buckland near Broadway, WR12 7LY

T: 01386 852 626

www.bucklandmanor.co.uk

An elegant country house hotel, Buckland Manor is part of the AA Hotel Group of the Year 2017-18 and is tucked away in a tranquil corner of the village of Buckland, next to the old village church. Set in 10 acres of grounds, the beautiful manor house with 20 bedrooms, is unmarked by the passing of time.



Calcot Manor

Near Tetbury, GL8 8YJ

T: 01666 890391

www.calcot.co

Calcot Manor & Spa has 35 gorgeous bedrooms and is set within a 220 acre meadowland. Calcot is renowned as one of the most luxurious spa hotels in the Cotswolds.



Chester House Hotel

Bourton-on-the-Water, GL54 2BS

T: 01451 820286

www.chesterhousehotel.com

In the heart of Bourton on the Water, Chester House is a 22 bedroom privately run hotel. With a contemporary country style, Chester House offers a unique mix of relaxed surroundings with exceptional service.



The Close Hotel

Near Tetbury, GL8 8AQ

T: 01666 502272

www.cotswold-inns-hotels.co.uk/the-close-hotel

Located in the heart of Tetbury, alongside antique shops, boutiques and the Royal Highgrove shop, lies The Close. This dog-friendly hotel is home to 18 stylish and characterful bedrooms as well as a lively bar, relaxed brasserie and 2 Rosette dining room, which looks out onto the beautifully-manicured garden.



Corinium Hotel & Restaurant

Cirencester, GL7 2DG

T: 01285 659711

www.coriniumhotel.com

Delightful 16th century independent hotel is quietly situated, though just five minutes walk into the town of Cirencester. Facilities include fifteen character bedrooms, a locally renowned restaurant, cosy bar and lounge, free wifi and ample on-site parking.



Cotswold Grange Hotel

Cheltenham, GL52 2QH

T: 01242 515119

www.cotswoldgrangehotel.co.uk

A privately owned 20 bedroom hotel located in a beautiful area of Cheltenham between the town centre and the racecourse, Cotswold Grange has the generous comfort of a large period house. Amenities include a bar and an excellent restaurant.



Cotswold House Hotel

Chipping Campden, GL55 6AN

T: 01386 840330

www.bespokehotels.com/cotswoldhouse

Award-winning luxury hotel and spa in the centre of Chipping Campden. 26 offering tranquillity, comfort, and exceptional food. Guests can also use the spa. With its idyllic location, flexible mix of accommodation and dining spaces it stands out as a group venue.



Cowley Manor

Cowley near Cheltenham, GL53 9NL

T: 01242 870900

www.cowleymanor.com

30 bedrooms, an award-winning spa, 55 acres of woodland, meadows and lakes, private rooms to meet and entertain all with inspiring views.



De Vere Cotswold Water Park

South Cerney near Cirencester, GL7 5FP

T: 01285 864000

www.phcompany.com/de-vere/cotswold-water-park-hotel

De Vere Cotswold Water Park is a contemporary luxury Cotswolds hotel with 328 bedrooms and 21 flexible meeting rooms that can cater for up to 800 people. As one of the largest hotels in the Cotswolds.



Dormy House Hotel

Broadway, WR12 7LF

T: 01386 852711

www.dormyhouse.co.uk

Perched high above the village of Broadway, with fabulous views across the Cotswolds, Dormy House is the perfect rural retreat with 48 rooms. Think cosy corners, log fires and sumptuous interiors.



Ellenborough Park

Cheltenham, GL52 3NJ

T: 01242 808992

www.ellenboroughpark.com

Ellenborough Park is a sumptuous manor house hotel on the outskirts of Cheltenham Spa. The main house dates back to the 15th century. 61 luxury rooms, a dual-level spa and casual and contemporary restaurants.



Eynsham Hall

Near Witney, OX29 6PN

T: 01993 885200

www.eynshamhall.com

Set in 3,000 acres of parkland, Eynsham Hall offers stately charm, without the stuffiness, uniquely mixing period features with a twist of modern design. With 135 bedrooms, 34 Main Hall rooms showcase the best features of the building, while the rooms in the grounds have a more contemporary style.



The Fish

Broadway, WR12 7LF

T: 01386 898573

www.thefishhotel.co.uk

The Fish, set in 400 acres of private estate, has 67 contemporary country bedrooms spread through four buildings. Options for lots of activities in the grounds like Segway safaris, exploring on quad bikes or trying your hand at Pistol Shooting or Archery.



Fire Service College

Moreton-in-Marsh, GL56 0RH

T: 01608 812167

www.phoenixetc.co.uk

Located on the edge of Moreton in Marsh, the Fire Service College offers group organisers an easy and convenient accommodation option: 300 en-suite bedrooms, with both twin and double options and dining facilities to match.



The Greenway Hotel & Spa

Cheltenham, GL51 4UG

T: 01242 862352

www.thegreenwayhotelandspa.com

Luxury country manor house hotel and spa with 21 beautifully designed rooms and gorgeous gardens. The Greenway Hotel & Spa is happily situated in the countryside just outside Cheltenham.



Hallmark Hotel Gloucester

Gloucester, GL4 6EA

T: 0330 0283408

www.hallmarkhotels.co.uk search Gloucester

95 bedrooms including 6 family rooms, health club with squash court and beauty treatment area, swimming pool and children's pool. Rates from £38 per person sharing a twin or double room. Located 5 minutes from the M5.



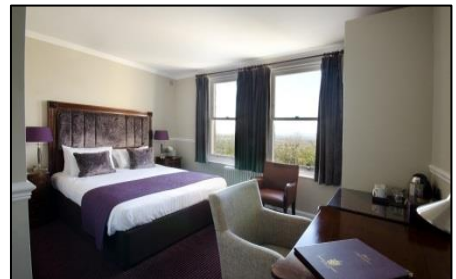
Hatton Court

Upton St Leonards near Gloucester, GL4 8DE

T: 01452 617412

www.hatton-court.co.uk

Gloucester's premier 4 star country house hotel with 67 rooms & a rosette award for culinary excellence. Traditionally decorated, spacious and elegant bedrooms (most with countryside views), all ensuite with desks, wifi, TVs & tea/coffee making facilities.



The Hare and Hounds Hotel

Near Tetbury, GL8 8QL

T: 01666 881000

www.cotswold-inns-hotels.co.uk/hare-and-hounds-hotel

Located in Westonbirt, the Hare and Hounds Hotel has 42 cosy yet contemporary bedrooms, a lively bar, cosy lounges and award-winning restaurant.



Heythrop Park Resort & Spa

Oxford , OX7 5UF

T: 01608 373333

www.heythropark.co.uk

Heythrop Park has two individual hotels to choose from, Crowne Plaza Heythrop Park-Oxford and Heythrop Park Hotel. The resort has a combined bedroom capacity of 358 rooms, extensive grounds, leisure facilities, spa and golf course.



Kings Head Hotel, Cirencester

Cirencester, GL7 2NW

T: 01285 700 900

www.kingshead-hotel.co.uk

The Kings Head Hotel is an elegant boutique hotel with 45 stylish bedrooms and five one-bedroom apartments, a unique subterranean Spa and relaxed British dining.



The Kings Hotel

Chipping Campden, GL55 6AW

T: 01386 840256

www.kingscampden.co.uk

The Kings Hotel, in the centre of Chipping Campden, is a charming 18th century town house boasting 18 distinctive and stylish rooms. Sympathetic renovation means all the modern day comforts you need with the character and history of a Cotswold stone building.



The Lamb Inn

Burford, OX18 4LR

T: 01993 823155

www.cotswold-inns-hotels.co.uk/the-lamb-inn

Located in the heart of Burford, The Lamb Inn boasts 17 classic Cotswold bedrooms, with history around every corner. This dog-friendly hotel is also home to a traditional bar and comfy lounges, a beautifully manicured garden and a 3 Rosette awarded brasserie.



Lords of the Manor

Upper Slaughter, GL54 2JD

T: 01451 820243

www.lordsofthemanor.com

An acclaimed Cotswold luxury hotel, with 37 rooms, Lords of the Manor prides itself on delivering a truly memorable stay (often tinged with a little decadence!). Located in Upper Slaughter – a beautiful Cotswold village near Bourton on the Water.



The Lygon Arms

Broadway, WR12 7DU

T: 01386 852255

www.lygonarmshotel.co.uk

Situated in idyllic Broadway, The Lygon Arms boasts 86 guest rooms and five exceptional culinary venues - the Lygon Bar & Grill, The Lygon Wine bar, The Russell Room, The Courtyard and The Spa Kitchen, numerous snugs and lounges, a luxurious spa.



The Manor House

Moreton in Marsh, GL56 0LJ

T: 01608 650501

www.cotswold-inns-hotels.co.uk/the-manor-house-hotel

Winner of the Condé Nast Johansens 'Best Luxury Value' Award 2017, the Manor House is set on Moreton in Marsh High Street and has 35 beautifully designed bedrooms, a cosy bar and library, a relaxed Brasserie and an award-winning restaurant.



Mercure Gloucester Bowden Hall

Gloucester, GL4 8ED

T: 0844 815 9077 option 2

www.mercuregloucester.co.uk

Situated in 12 acres, Bowden Hall has 66 newly refurbished rooms than can cater for all its guests needs. Complimentary wifi & parking.



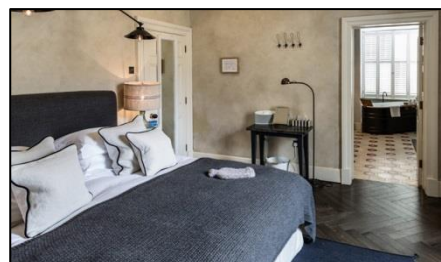
No.131

Cheltenham, GL50 1NW

T: 01242 822939

www.theluckyonion.com

Classic on the outside, contemporary British on the inside. 11 beautifully designed bedrooms in the heart of Cheltenham with more rooms to follow in 2018. Traditional classics & modern European in the restaurant and a choice of private dining rooms.



No.38 The Park Cheltenham

Cheltenham, GL52 2AH

T: 01242 822929

www.theluckyonion.com

No.38 The Park is a Georgian town house in the heart of Cheltenham with 13 bedrooms. Beautiful interiors, an open kitchen restaurant to seat up to 50 and spacious drawing rooms, a courtyard and meeting spaces.



Noel Arms Hotel

Chipping Campden, GL55 6AT

T: 01386 840317

www.bespokehotels.com/noelarmshotel

The Noel Arms Hotel is one of the oldest Cotswold inns and has 28 rooms. You really shouldn't leave without trying one of Chef Indunil's famous curries - he has been named Best Pub Curry Chef on three occasions!



Number Four at Stow

Stow-on-the-Wold, GL54 1JX

T: 01451 830297

www.hotelnumberfour.co.uk

18 rooms and a large car park with space for coaches. Menus for groups can be arranged for lunch and dinner. Large garden for team games. Meeting room for 20 boardroom.



The Painswick

Painswick, GL6 6YB

T: 01452 813688

www.thepainswick.co.uk

The Painswick is home to an excellent restaurant, 16 peaceful bedrooms and two treatment rooms.



The Porch House

Stow-on-the-Wold, GL54 1BN

T: 01451 870 048

www.porch-house.co.uk

The Porch House is reputed to be England's oldest inn and has 13 individually designed rooms at the Porch House, ranging from the Porch (a cosy but beautifully appointed double room) to the three feature rooms, to cover most budgets.



The Queens Hotel

Cheltenham, GL50 1NN

T: 01242 514754

www.queenshotelcheltenham.co.uk

A grand and imposing Regency property sitting right in the heart of Cheltenham. 84 beautiful rooms, opulently finished public areas, stunning views of the Imperial Square Gardens and dining in the exquisite restaurant or the characterful Orangery.



Redesdale Arms

Moreton-in-Marsh, GL56 0AW

T: 01608 650308

www.redesdalearms.com

Award winning 34 bedroom hotel in Moreton in Marsh High Street within walking distance of the mainline railway station. There is free wi-fi throughout the Hotel with hard wire connections within many of the rooms. Parking is available.



Riverside House

Cirencester, GL7 1LF

T: 01285 647642

www.riversidehouse.org.uk

Riverside House offers good value bed and breakfast accommodation for groups with 24 rooms (10 double, 9 twin, 5 single). Close to Cirencester town centre, with secure on-site parking. Group rates from £45 per person offers good value.



Royal Agricultural University

Cirencester, GL7 6JS

T: 01285 652531

www.rau.ac.uk – click on venue hire

The Royal Agricultural University is a mile from Cirencester town centre with magnificent Victorian Gothic buildings for dining in and accommodation in modern residences around the campus, many with views over open countryside - 330 en-suite rooms.



Sheep on Sheep Street

Stow-on-the-Wold, GL54 1AG

T: 01451 830344

www.thesheepstow.co.uk

The Sheep on Sheep Street revealed its new look (and new name) in July 2016. Located in the heart of Stow on the Wold it has 22 wonderfully comfortable en suite rooms.



The Slaughters Country Inn

Lower Slaughter, GL54 2HS

T: 01451 822143

www.theslaughtersinn.co.uk

Set in picturesque Lower Slaughter, the Slaughters Country Inn is part of the AA Hotel Group of the Year 2017-18 and offers the authentic charm of a traditional village. 25 guestrooms and six charming cottages designed to reflect the property's character, blending the traditional features with contemporary design.



The Snooty Fox

Tetbury, GL8 8DD
T: 01666 502436
www.snooty-fox.co.uk

The Snooty Fox is a quintessential English inn: 12 intimate and stylish bedrooms with traditional décor all ensuite with desks, wifi, TVs and tea and coffee making facilities. The ground floor boasts a busy bar and restaurant serving local produce, cooked creatively.



Stratton House, Cirencester

Cirencester, GL7 2LE
T: 01285 651761
www.strattonhousehotel.com

Recently restored 42 bed country house hotel. The focus is on friendly service with a personal touch. The hotel has tranquil gardens, a superb restaurant and several function rooms.



The Swan Hotel

Bibury, GL7 5NW
T: 01285 740695
www.cotswold-inns-hotels.co.uk/the-swan-hotel

Located in the heart of Bibury, the Swan Hotel has 22 bedrooms, including 4 stunning cottage suites, a lively bar, cosy writing room and stylish brasserie.



Tewkesbury Park

Tewkesbury, GL20 7DN
T: 01684 272300
www.tewkesburypark.co.uk

Tewkesbury Park, set in 163 acres of parkland, has recently completed an extensive renovation, and now boasts: 9 luxury suites; 84 beautiful rooms; 2 meeting rooms; 2 spa rooms; an events suite, as well as its golf course and extensive leisure club.



Thyme

Southrop near Lechlade, GL7 3NX
T: 01367 850174
www.thyme.co.uk

Thyme is a family owned, English country destination - an elegant boutique hotel with 8 bedroom suites, 3 cottage suites and 2 beautifully restored cottages; a spectacular private dining space in a medieval tithe barn; and a state-of-the-art cookery school.



The Wheatsheaf

Northleach, GL54 3EZ

T: 01451 860244

www.theluckyonion.com

A 17th century coaching inn nestled with 14 beautifully designed bedrooms, stunning tiered cottage gardens, a cosy snug and a treatment room. The restaurant & bar welcomes a group for lunch and the private dining room is ideal for a delicious supper.



The White Hart Inn

Winchcombe, GL54 5LJ

T: 01242 602359

www.whitehartwinchcombe.co.uk

The White Hart Inn in Winchcombe is a busy town centre pub with a great atmosphere and full of charm with its open fires and original features. There are stylish bedrooms with desks, wifi, TVs and tea and coffee making facilities.



Three Ways House Hotel

Mickleton, GL55 6SB

T: 01386 438429

www.threewayshousehotel.com

Three Ways House Hotel is a privately owned hotel in Mickleton with 48 bedrooms, an AA Rosette award restaurant, a private function room ideal for group lunches and a car park easily accessible by coach. The hotel is home to the famous Pudding Club – a great idea to add to your itinerary.



Wyck Hill House Hotel and Spa

Stow-on-the-Wold, GL54 1HY

T: 01451 831936

www.wyckhillhousehotel.co.uk

Located just outside Stow on the Wold, Wyck Hill House Hotel and Spa is a 55 bedroom, 4 star country house hotel nestled within 50 acres of grounds, offering breath taking views of the beautiful Windrush Valley and Cotswold hills.

